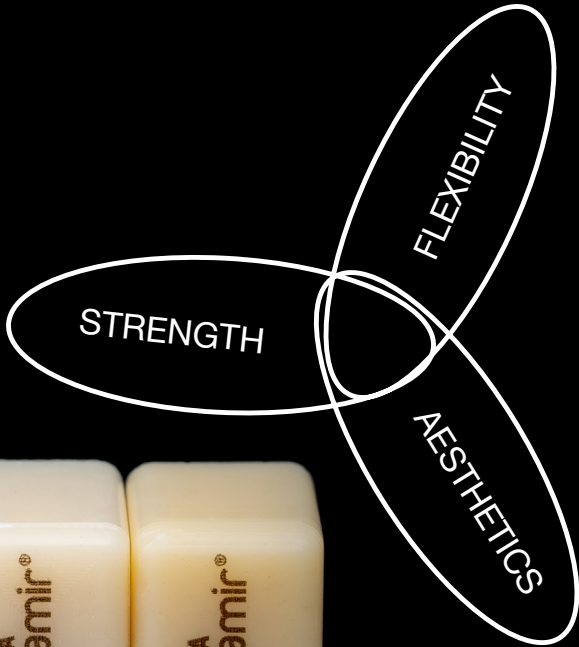


DIRECTA

ceramir®

CAD/CAM BLOCKS



**Nature inspired innovation
with predictable and reliable results.**

Ceramir CAD/CAM BLOCKS are a breakthrough in the market of CAD/CAM materials.

An advanced patented laser sintering technology creates a material consisting of a single glass phase embedded in a hybrid matrix.

The result is a unique combination of strength, flexibility and aesthetics, creating an efficient workflow and many other advantages.

With Ceramir CAD/CAM BLOCKS you can easily complete your restoration in three simple steps: Milling, polishing and cementation.



Patented laser sintering technology creates a unique combination of strength, flexibility and aesthetics



High edge stability and fracture resistance



Permanent natural appearance



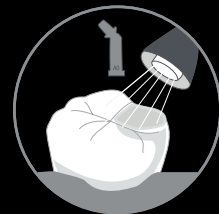
No additional firing required
Simply polish and cement



Shorter milling time
Reduced chair time



Kinder to the milling burs



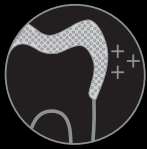
Easy to adjust and repair



Bisphenol A free
and non-toxic



Aesthetic and Strong



High Fracture Resistance

The unique material of Ceramir CAD/CAM BLOCKS has the strength comparable to particle infiltrated ceramics (Lithium disilicate) without having the brittleness of pure ceramics. The modulus of elasticity, which is similar to dentin (20 GPa), allows a reduction in tension during masticatory load creating a shock absorbing effect decreasing occlusal stress.

Technical Data	DEJ Dentin-Enamel Junction	Ceramir CAD/CAM BLOCK	e.max	Zirconia
Flexural Strength (Biaxial)	199,3 MPa	320 MPa	250 - 300 MPa	1000 MPa
Compressive Strength	384 MPa	550 MPa	600 MPa	1200 MPa
Flexural Modulus	20 GPa	20 GPa	100 GPa	200 GPa
Surface Hardness	159 HV	100 HV	600 HV	1200 HV

Source: Linny Angker, et al Journal of Dentistry, (2003) 31, 261 - 267
Phillips Science of Dental Materials

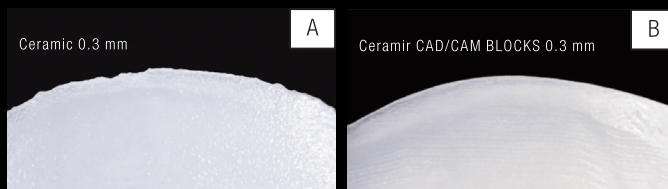
Saveetha Dental University
QS University World Ranking 13

Technical data from
manufacturer's documentation



High Edge Stability

Due to the characteristics of the material, restorations made of Ceramir CAD/CAM BLOCKS can be milled to very thin margins while keeping a high edge stability. A full crown will need a thickness of 1.5 mm in areas with cusps and occlusal contacts, whilst veneers can be milled down to as little as 0.3-0.5 mm maintaining a smooth edge to enable as little gap formation as possible.



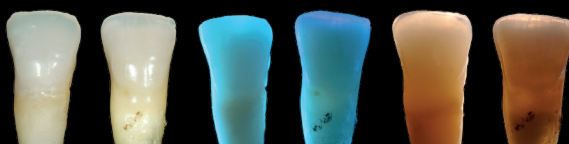
Photographs of veneers showing margin characteristics. Ceramic margins (A) milled to 0.3 mm compared to veneers made of Ceramir CAD/CAM BLOCKS (B) milled to 0.3 mm.

Images: Courtesy of Dr. C. Novelli



Natural Look

Due to the homogenous glass-like structure of the material, Ceramir CAD/CAM BLOCKS have a natural translucency with light reflections and, after a very short polishing time, a high gloss surface similar to that of a natural tooth. This gives a permanent natural appearance. Even more natural individual characterisations can be accomplished using staining kits, made of flowable composite material, which is applied on the inside of the restoration giving an excellent aesthetic result over time.



Images: Courtesy of Dr. Dietschi, Geneva Smile Centre, Switzerland

Natural tooth (right side) compared to Ceramir CAD/CAM BLOCKS restoration (left side) under different lighting conditions. Ceramir CAD/CAM BLOCKS matches the optical properties of the natural tooth.

Efficient Cost-Effective Workflow

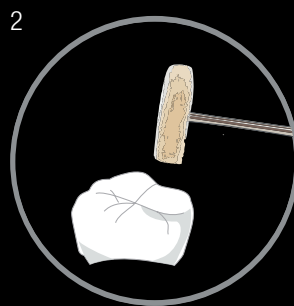


Simply Polish and Cement

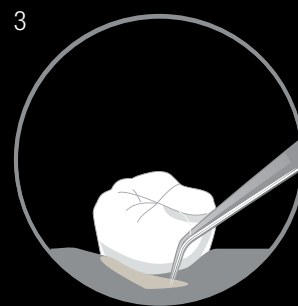
The unique properties of Ceramir CAD/CAM BLOCKS enable a much shorter milling time than needed for other CAD/CAM blocks. This reduces chairside time and it is possible to save money as the milling burs last much longer than when milling other CAD/CAM blocks. With Ceramir CAD/CAM BLOCKS, you save even more time and equipment since no additional firing is required - just polish and cement.



Milling



Polishing



Cementation

Ceramir CAD/CAM BLOCKS can be used with a wide variety of different indications: crowns, inlays, onlays and veneers. Ceramir CAD/CAM BLOCKS can even be used for implant supported prosthetics.

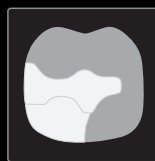
Indications



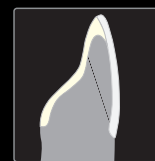
Inlay



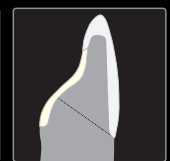
Onlay



Occlusal Veneer



Veneer



Implant Crown



Crown



Partial Crown



Easy to adjust and repair

Due to the composition of the material, restorations can easily be repaired if needed with composite in the mouth.

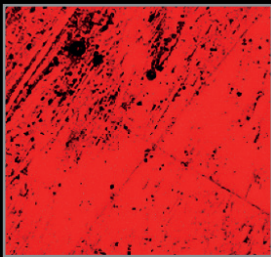
Patient friendly



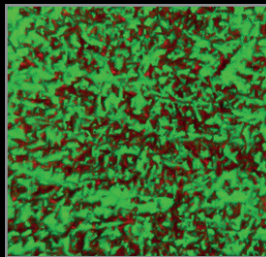
Non toxic and antibacterial

Ceramir CAD/CAM BLOCKS are proven free of Bisphenol A, non-toxic and cause no irritation to skin or mucosa.*

The antibacterial properties of Ceramir CAD/CAM BLOCKS coming from zinc oxide and fluoride in the material, prevent biofilm and bacterial growth on the surface of the restoration.



Test sample-Ceramir CAD/CAM BLOCKs no biofilm formation following exposure to bacteria.



Control sample - composite restorative material: Biofilm formation following exposure to bacteria.

*Toxicity Studies: Human Stem Cells Intracutaneous reactivity test (ISO 10993-23:2021) and skin sensitization test (ISO 10993-10:2021) - Data on file.

Patient case

Non-Prep Attrition / Abrasion

Female patient, 52 years. Main patient complaint: Discolored teeth, size of teeth

Oral examination revealed severe tooth wear (erosions) due to acid reflux. With the patient's consent, old restorations were removed and the vertical dimension was restored. A non-invasive full-mouth reconstruction was performed, including anterior veneers. This work resulted in an ideal smile line and no postoperative sensitivity. A four-year follow-up showed intact marginal integrity and the restorations maintained their original gloss.



**BEFORE
TREATMENT**



**4 YEARS AFTER
TREATMENT**

Images: Courtesy of Cosmident (Belgium)

Dental Team: Cosmident (Belgium)
Marco Tudts D.D.S M.Sc.D
Stephan Lampl B.Ch.D. MClin. Aesthetic & Restorative Dent. M.D.T. B.B.A.
Thomas Lampl C.D.T.
Material: Ceramir CAD/CAM BLOCKS

Type, Size and Colour

T-BLOCK
Translucent Enamel



Enamel

C-BLOCK
Chroma



A0

A1

A2

A3

i-BLOCK Implant
Translucent Enamel & Chroma



Enamel

A0

A1

A2

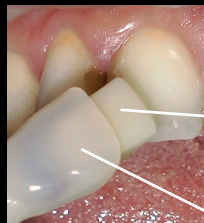
A3

All Ceramir CAD/CAM BLOCKS are available in standard size 12 x 14 x 18 mm.



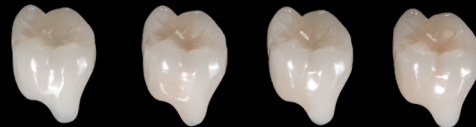
Ceramir CAD/CAM T-BLOCK

Ceramir CAD/CAM T-BLOCKS are highly translucent blocks that mimic the natural enamel. This universal T-BLOCK can be individually colour matched through cementation, which can simplify the clinical procedure leading to less inventory stock needed.



DENTIN
Shade

ENAMEL
T-BLOCK



ENAMEL
T-BLOCK +
A0 DENTIN
SHADE

ENAMEL
T-BLOCK +
A1 DENTIN
SHADE

ENAMEL
T-BLOCK +
A2 DENTIN
SHADE

ENAMEL
T-BLOCK +
A3 DENTIN
SHADE



Ceramir CAD/CAM C-BLOCKS

Ceramir CAD/CAM C-BLOCKS are chromatic blocks, which correspond to shades A0, A1, A2 and A3.



Ceramir CAD/CAM i-BLOCK

Ceramir CAD/CAM i-BLOCKS are used for precise and reliable fabrication of implant supported restorations. They fit precisely onto titanium base (Ti-Base) or similar attachments so that the final restoration can be placed in the same appointment to save time and cost and to improve the patient's experience.



Ceramir i-BLOCKS can be used as screw retained single abutment crowns as well as for mesostructure (abutment) and final crowns. Its antibacterial properties and its form, which maintains a good mucosal seal, help to prevent biofilm and bacteria growth on the restoration surface. The composition of the material creates a shock absorbing effect comparable to the one of a natural tooth to withstand occlusal stress.



Ø S / Ø L
12 x 14 x 18 mm

Precision manufacturing processes guarantee a precise fit onto Titanium Base (Ti-Base or similar attachments) so that the final restoration can be placed in the same appointment, reducing treatment sessions and improving the patient experience.

Ceramir i-BLOCKS are compatible with all systems that provide a Ti-Base interface.

REF	Product Description	Pieces
805187	Ceramir CAD/CAM T-BLOCK Universal Enamel - 12x14x18mm	5 pcs/box
805188	Ceramir CAD/CAM C-BLOCK A0 - 12x14x18mm	5 pcs/box
805189	Ceramir CAD/CAM C-BLOCK A1 - 12x14x18mm	5 pcs/box
805190	Ceramir CAD/CAM C-BLOCK A2 - 12x14x18mm	5 pcs/box
805191	Ceramir CAD/CAM C-BLOCK A3 - 12x14x18mm	5 pcs/box
805192	Ceramir CAD/CAM i-BLOCK (ø S) Universal Enamel - 12x14x18mm	5 pcs/box
805193	Ceramir CAD/CAM i-BLOCK (ø S) A0 - 12x14x18mm	5 pcs/box
805194	Ceramir CAD/CAM i-BLOCK (ø S) A1 - 12x14x18mm	5 pcs/box
805195	Ceramir CAD/CAM i-BLOCK (ø S) A2 - 12x14x18mm	5 pcs/box
805196	Ceramir CAD/CAM i-BLOCK (ø S) A3 - 12x14x18mm	5 pcs/box
805197	Ceramir CAD/CAM i-BLOCK (ø L) Universal Enamel - 12x14x18mm	5 pcs/box
805198	Ceramir CAD/CAM i-BLOCK (ø L) A0 - 12x14x18mm	5 pcs/box
805199	Ceramir CAD/CAM i-BLOCK (ø L) A1 - 12x14x18mm	5 pcs/box
805200	Ceramir CAD/CAM i-BLOCK (ø L) A2 - 12x14x18mm	5 pcs/box
805201	Ceramir CAD/CAM i-BLOCK (ø L) A3 - 12x14x18mm	5 pcs/box
10521	Edelweiss Veneer Bond	1 pc/box
13750	Edelweiss Effect Shade Opaque White	1 pc/box
13760	Edelweiss Effect Shade Blue	1 pc/box
14702	Edelweiss Effect Shade Ice	1 pc/box
23700	Edelweiss Effect Shade Fissure	1 pc/box

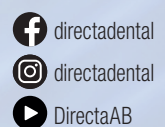
TECHNOLOGY BY

edelweiss
DENTISTRY

DIRECTA

DIRECTA AB
P.O. Box 723,
194 27 Upplands Väsby, SWEDEN
+46 8 506 505 75
info@directadental.com
www.directadental.com

DIRECTA INC
64 Barnabas Road, Unit 3
Newtown, CT. 06470, United States
+1 203.491.2273
infousa@directadental.com
www.directausa.com



The contents of this brochure including layout and images are protected by copyright ©2024Directa AB. All rights reserved.